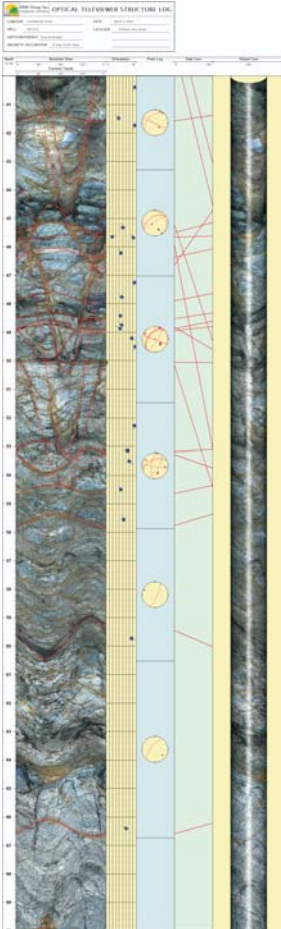


GEOPHYSICAL SERVICES

HIGH RESOLUTION GEOPHYSICAL TECHNOLOGIES



ARM Geophysics provides a full range of both surface and borehole geophysics. ARM personnel have significant experience performing geophysical surveys for a wide variety of investigations across the United States. These sites have been situated in varying terrains having many different types of subsurface conditions. Our geophysicists apply their geological and geotechnical knowledge and experience to provide the most cost effective surveys. In numerous applications, geophysics can provide cost savings to you and/or your clients. ARM Geophysics has three main business units which include Surface Geophysics, Borehole Logging, and Munitions Response Surveys.

Our borehole geophysical group provides state of the art logging capabilities including a full suite of standard logging tools and Optical and Acoustic Televiwer, Neutron, Gamma, and Heat Pulse Flowmeter. ARM's new logging truck can log to a depth of 1200 meters.

The surface geophysics group performs investigations for a variety of markets including Environmental, Geotechnical, Groundwater Resource, and Utility Mapping. ARM personnel have capabilities and experience to perform Seismic, GPR, Electrical

ARM's PRIMARY SERVICE MARKETS INCLUDE:

- Oil and Gas Exploration
- Environmental
- Geotechnical
- Groundwater Resources
- Utility Mapping
- Munitions Response Programs



Resistivity, Gravity,

Magnetic and Electromagnetic Surveys. This wide variety of capabilities allow ARM geophysicists to select and perform the best and most appropriate survey for your site.

Using a wide variety of sensors and navigation/positioning systems, ARM's Munitions Response Program group has identified buried Unexploded Ordnance (UXO) on closed and active military firing ranges across the United States. DGM surveys have included Geophysical Prove-Outs, Meandering Path, Transects, and Grids for EE/CA's and RI/FS's, Grid Surveys for Removal Actions, and Reacquisition Surveys.