

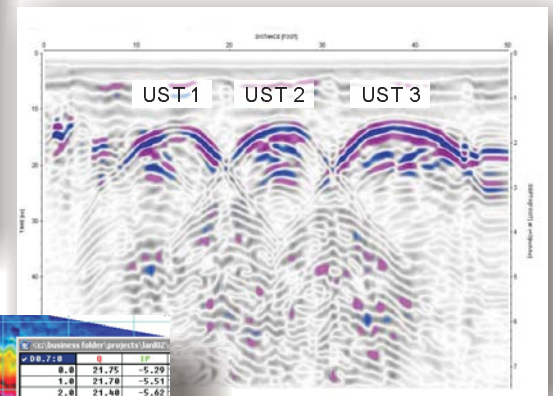
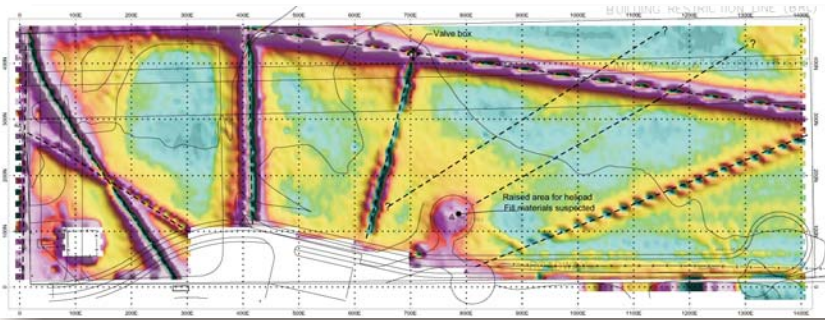
# ENVIRONMENTAL GEOPHYSICAL SERVICES

## HIGH-RESOLUTION GEOPHYSICAL TECHNOLOGIES

**A**RM Geophysics (ARM) consists of an experienced team of geophysicists that provide cost-effective solutions to environmental projects. Since its inception, ARM has performed a broad range of successful investigations throughout the United States and overseas.

### SERVICES & APPLICATIONS

- Locate underground storage tanks (USTs)
- Private utility markouts
- Environmental site characterization
- Delineate waste burial sites
- Map buried drums
- Delineate aquifers or confining layers
- Map conductive or non-conductive contamination plumes



### BENEFITS OF USING GEOPHYSICS

- Cost-effective solutions
- Reduce total project time
- Locate borings or excavations at strategic sites
- Extend subsurface information
- Improve confidence levels
- Minimize health risks
- Correlate information between borehole sites
- Minimize impact to site and operations

