

GEONICS EM61 MK2 SERVICES

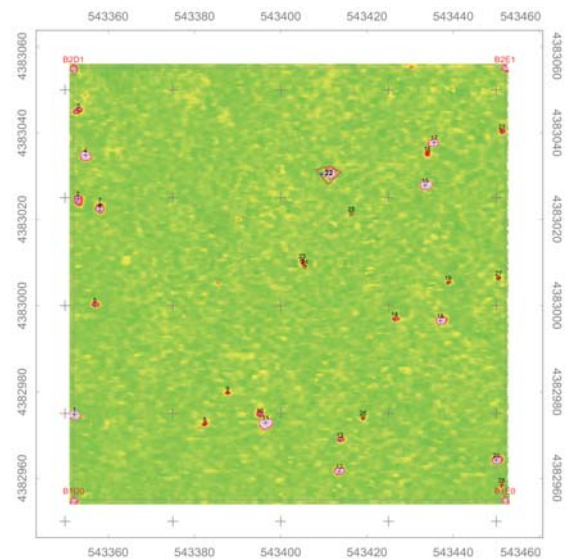
HIGH-RESOLUTION GEOPHYSICAL TECHNOLOGIES



ARM personnel performing towed array data collection.

ARM Geophysics (ARM) utilizes Geonics EM61 MK2 metal detectors for a variety of applications ranging from UST location to UXO detection and discrimination. ARM can operate the EM61 within a variety of different platforms. ARM has recently mapped over 500 acres of combined towed array and man-portable data at the Former Lowry Bombing and Gunnery Range BT5, Aurora, Colorado in support of CH2M Hill's removal action at the site.

ARM can integrate the EM61 with a variety of positioning systems such as RTK Global Positioning Systems (RTK) and Robotic Total Stations (RTS). ARM supported Advent Environmental, Inc. for over eighteen months collecting integrated RTS and EM61 data in the woods at the Former Conway Bombing Range near Myrtle Beach, South Carolina. ARM also evaluates new technologies as they become available, such as the ENSCO Ranger system which was recently utilized on a pilot project at Fort Devens, Massachusetts.



EM61 data results showing potential MEC targets.



Man-portable survey in wooded terrain.

ARM can complete processing, interpreting, and deliverables preparing on our data sets or support processing efforts of data collected by other field personnel as well. ARM is also capable of conducting third party geophysical QC / QA. ARM has completed project support for companies such as: CH2M Hill, Advent, RRR Inc., Power Surveying, and Explosive Ordnance Technologies, Inc.

APPLICATIONS

- Munitions Response Mapping
- UST and Drum Location
- Utility Mapping
- Waste Pit and Landfill Mapping