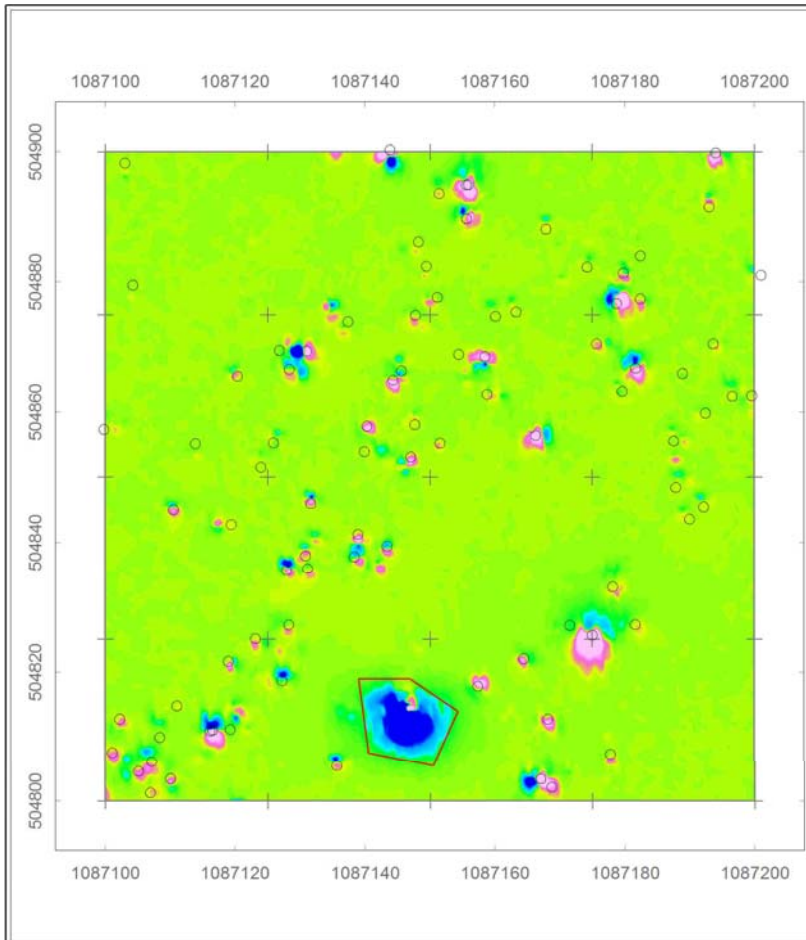


TM-6 Magnetometer Processing and Deliverable Example



Grid A1
 MAGNETIC Geophysical Survey
 GPS Positioned Quad TM-6 Magnetometer
 Site Location Withheld

Legend

- Interpreted Anomaly
- 25. Anomaly Number
- Grid Boundary
- △ Grid Corner
- Cultural / Utility

Mag nT

-290.0 -180.0 -70.0 20.0 100.0 200.0

Scale 1:800

10 0 10 20 30 (meters)

WGS 84 / UTM zone XX

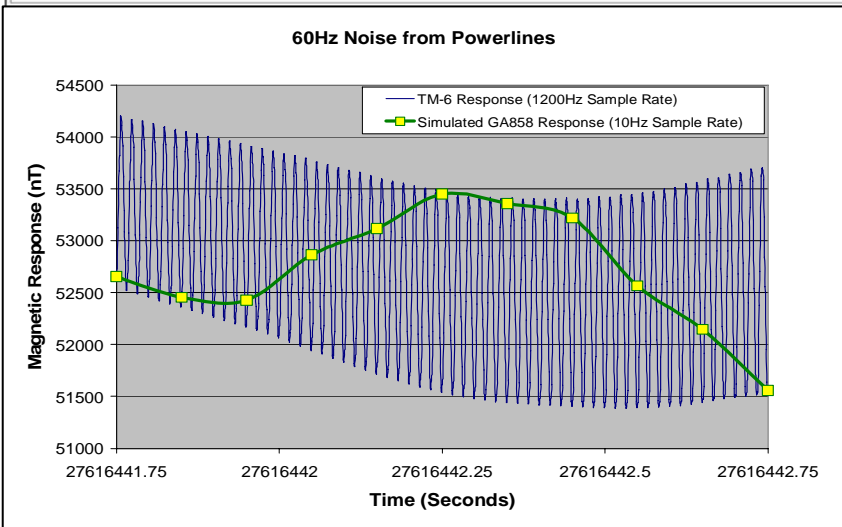


Final_Map.map (6 Packed Files)

SiteWide.gdb

MI Mag	Dist	MI Mag Fil
34.2	618.20	621.38
34.5	895.96	898.61
34.8	1141.72	1144.15
35.1	936.99	938.99
35.4	423.44	424.94
35.7	-58.01	-56.59

MI Mag Fil 12.2 37.2 62.3
 (Fid)
 Cell -56.59



The TM-6 Magnetometer samples at a rate of 1200Hz which allows ARM to remove the effects of 50Hz/60Hz powerline interference. Data is precisely timestamped and synchronized with a GPS Strobe. The inbuilt navigation system provides a real time track-path as well as quality indicators which alert the operator of data quality or positioning system problems. It can be deployed in man-portable or towed array operations.

ARM specializes in producing USACE standard deliverables including all required QC tests and information.

